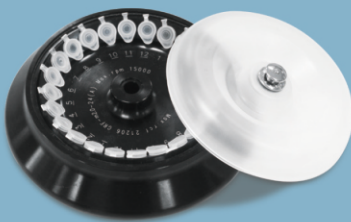


NEW

Microcentrifuge **1524**



Streamlined for good value **15,000 RPM / 21,206 xg**



Dedicated 24 x microtube
'Snap-fit' rotor



Simultaneous display of all
parameters







Numeric input keypad and
Icon buttons

GYROZEN

QUALITY | RELIABILITY | VALUE

FIXED ANGLE ROTOR, GRF-m2.0-24

			
0.2 mL	0.5 mL	1.5 / 2.0 mL	2.0 mL with screw cap
Max. 16,854 xg	Max. 18,363 xg	Max. 21,206 xg	Max. 21,206 xg



Features

- Compact and light-weight design
- Quick Acc / Dec time of ≤ 15 sec
- Selectable time mode of "AT SET SPEED" for time counting starts when the set speed is reached
- A separate "PULSE" key for a quick spin down
- "Key-lock" function to secure the parameters during operation

Technical Specifications

Max. RPM	15,000 rpm
Max. RCF	21,206 xg
Max. capacity	24 x 1.5 / 2.0 mL
ACC / DEC ramps	9 / 10 steps
Acc. time to max. speed	≤ 15 sec
Dec. time from max. speed	≤ 15 sec
Time control	< 100 min, pulse, continuous
Time counting	Selectable, at set speed or from starting
Noise level	≤ 60 dB
Program memory	100
Imbalance cutoff / tracking	Yes
Rotor identification	Manual
Dimension (W x D x H, mm)	240 x 378 x 240
Height with open lid	495 mm
Weight without rotor	15 kg
Power requirement	450 VA
Power input (V, Hz)	210 V ~ 240 V, 50/60 Hz (110 V optional)

Ordering Information

Cat No.	GZ-1524
Description	1524, Microcentrifuge including an Angle Rotor for 24 Microtubes, GRF-m2.0-24